



HEIGHT ADJUSTABLE SERIES

Let us move with you....



HEIGHT ADJUSTABLE BASES

ATHENA

Shown with **Innovations** top (sold separately)



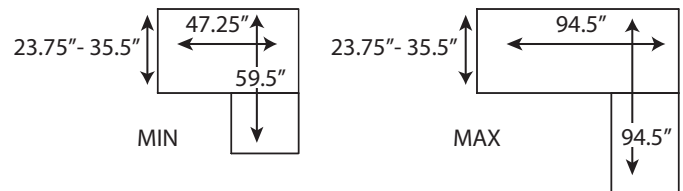
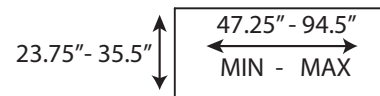
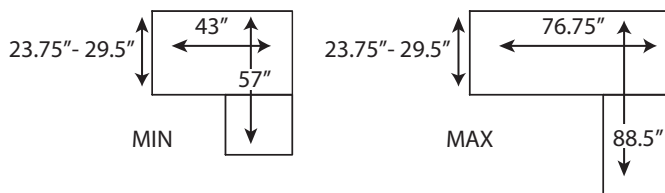
SKU: ATH-E1-2LEG
SKU: ATH-E1-3LEG

CALYPSO

Shown with **Innovations** top (sold separately)



SKU: CAL-E1-2LEG
SKU: CAL-E1-3LEG



- **Height Range:** 27.5" - 45.5" (excludes top)
- **Available Finish:** Silver (SL) or Black (BL)
- Heavy Duty 2-stage steel frame design
- Actuator system with synchronized motor driving each leg
- Anti-collision function
- CSA/UL Certified
- **ANSI/BIFMA Certified** (2 leg model x 5.5-2014)
- **Quick assembly design**
- 4 programmable memory positions
- Compatible with most **HDL** laminate tops: 24x48, 30x60, 30x66, 30x72, and 24x36 or 24x42 (return only) stocked in 10 finishes (24x42 is not available in Pure White or Grey)
- Operated at 1" per second
- Whisper quiet <50dB
- Max weight capacity: 2 leg base only - 220 lbs (100kg)
3 leg base only - 330 lbs (150kg)
- Includes 10mm adjustable glides. Optional mobile casters available for purchase (900-CASTER-M8-HD)
- 2-year warranty on electrical components; 5-year warranty for steel components
- Compatible with modesty or desktop panels

- **Height Range:** 22" - 48" (excludes top)
- **Available Finish:** Silver (SL), Black (BL) or White (WH)
- Heavy Duty 3-stage steel frame design
- Actuator system with synchronized motor driving each leg
- Anti-collision function
- CSA/UL Certified
- **BIFMA Certified**
- **Quick assembly (easy fold out leg/frame)**
- 3 programmable memory positions including home
- Compatible with most **HDL** laminate tops: 24x48, 30x60, 30x66, 30x72, and 24x36 or 24 x 42 (return only) stocked in 10 finishes (24x42 is not available in Pure White or Grey)
- Operated at 1.3" per second
- Whisper quiet <50dB
- Max weight capacity: 2 leg base - 265 lbs (120kg)
3 leg base - 320 lbs (145kg)
- Includes 10mm adjustable glides. Optional mobile casters available for purchase (900-CASTER-M8-HD)
- 7-year warranty on mechanical components; 15-year warranty on structural components
- Compatible with modesty or desktop panels

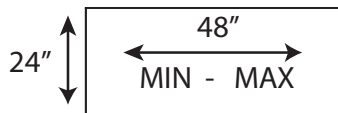
HEIGHT ADJUSTABLE BASES CONT.

RISE

Shown with included 24x48 top (rounded corners & grommets)



SKU: RIS-E1-2LEG

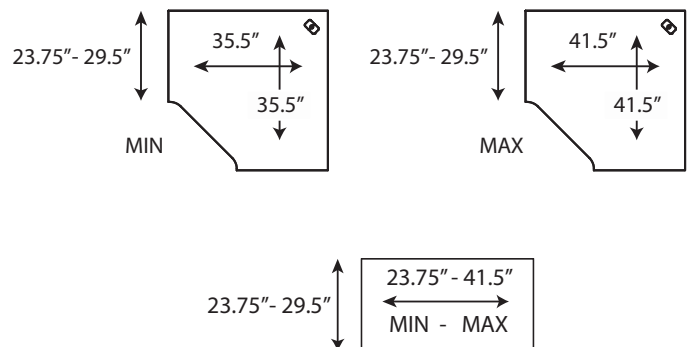


ATLAS

Shown with **Innovations** top (sold separately)



SKU: ATL-E1-1LEG



- **Height Range:** 28.8" - 48" (includes top)
- **Available Finish:** White (WH)
- Sturdy 2-stage steel frame design
- Actuator system with single motor driving both legs
- Anti-collision function
- CSA/UL Certified
- **ANSI/BIFMA Certified**
- **Quick assembly design**
- 4 programmable memory positions
- Comes with a predrilled white 24x48 top featuring rounded corners, a slide-out drawer, and two round grommets (one in each of the rear corners).
- Operated at 1" per second
- Whisper quiet <50dB
- Max weight capacity: 2 leg base only - 176 lbs (80kg)
- Includes 10mm adjustable glides. Optional mobile casters available for purchase (900-CASTER-M8-HD)
- 2-year warranty on electrical and mechanical components
- Compatible with modesty or desktop panels

- **Height Range:** 23.5" - 49" (excludes top)
- **Available Finish:** Silver (SL)
- Sturdy 3-stage steel frame design
- Actuator system with a heavy-duty motor driving the single leg
- Anti-collision function
- CSA/UL Certified
- **Quick assembly design**
- 4 programmable memory positions including home
- Compatible with smaller **HDL** laminate tops: 24x36 & 24x42 stocked in 10 finishes (24x42 is not available in Pure White or Grey) (36-42" Corner tops are available through **HML** in all standard finishes)
- Operated at 1" per second
- Whisper quiet <55dB
- Max weight capacity: 1 leg base - 130 lbs (59kg)
- Includes 10mm adjustable glides. Optional mobile casters available for purchase (900-CASTER-M8-HD)
- 2-year warranty on electrical and mechanical components

HEIGHT ADJUSTABLE BASES CONT.

MANUAL

Shown with **Innovations** top (sold separately)



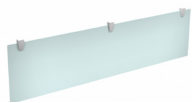
SKU: 900-CRANK

- **Height Range:** 28.75" - 48.5" (excluding top)
- **Available Finish:** Silver (SL)
- Sturdy, 2-stage, steel frame construction
- Actuator system drives both legs via a manual hand-crank (Hand-crank collapses and retracts when not in use)
- **Quick assembly design**
- Compatible with most rectangular **HDL** laminate tops: 24x42, 24x48, and 30x60 stocked in 10 finishes (24x42 is not available in Pure White or Grey)
- Operated at 1" per 2.5 hand-crank revolutions
- Max weight capacity: 2 leg base - 154 lbs (70kg)
- Includes 14.5mm adjustable glides
- 2-year warranty on mechanical components
- Compatible with modesty or desktop panels



Calypso Height Adjustable Base with Innovations Tops
 Shown: Winter Wood & Grey Laminate, Jupiter seating, blue tackboard fabric, NEW Rectangular Bullet Top Desk & NEW Overhead Storage

INNOVATIONS MODESTY PANELS



15" MODESTY PANELS

- Multiple sizes available
- Frosted plexiglass or acoustic PET
- Choice of Black (BL) or Silver (SL) brackets

Plexiglass Finish:



FROSTED (FR)

Acoustic PET Finish:



CHARCOAL GREY (CH)



STORM GREY (ST)

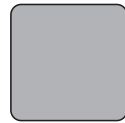


14" LAMINATE MODESTY PANELS

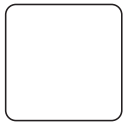
- Multiple sizes available
- Black (BL), Grey (GR), or Pure White (WH) laminate finish
- Black (BL) brackets



BLACK (BL)



SILVER (SL)



PURE WHITE (PW)

See price book pages for a complete list of SKUs and details.

ACCESSORIES

FLOOR WIRE MANAGEMENT

100-WM1300

- Adjustable length (max. 51.25")

Available Finish: Black (BL), Silver (SL), or White (WH)



HEIGHT ADJUSTABLE LOCKING CASTER

900-CASTER-M8-HD

- Kit of 2 locking caster wheels
- Compatible with Athena, Calypso, Rise, & Atlas

Available Finish: Black (BL)



HANGING CPU HOLDER

100-2-HCPU

- Durable heavy gauge steel. Mounting hardware included.
- Fixed location install. Adjustable for different CPU widths (3.25" - 8") & Heights (15.375" - 21.75")

Available Finish: Black (BL) or White (WH)

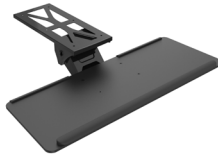


ARTICULATING KEYBOARD TRAY

100-AKTM-2

- Includes optional 1.75" risers to help clear height adjustable base frames
- Tilt range of -16° - +24°
- 2.2lbs (1kg) weight rating

Available Finish: Black (BL)



WIRE MANAGEMENT TRAY

100-WM22

- Hanging mounting system allows for easy access and height adjustment
- 21.75" long

Available Finish: White (WH)

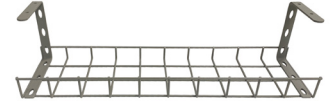


WIRE MANAGEMENT RACK

100-WMT22-RACK

- 22.75" long

Available Finish: Grey (GR)



PNEUMATIC DUAL MONITOR ARM

100-MA2C

- Detachable VESA plate (75x75 & 100x100)
- Each arm can support a monitor 17" - 32" in size and 2.2 - 22lbs in weight
- Edge-clamp or grommet mountable
- Built-in USB-A/USB-C ports

Available Finish: Black (BL)



ANTI-FATIGUE MAT

100-2030AFM

- Easy-clean faux leather with a high-density polyurethane core
- Non-curling bevelled edges

Available Finish: Black (BL)



For all available accessories, please see 100 Series in the price book.

CALYPSO ACCESSORIES

CORNER MODULE FOOT

CAL-E1-2LEG-CMF

- Provides increased stability on 36" deep extended corner units. Replaces standard foot on 36" deep end.

Available Finish: Black (BL) or Silver (SL)



OPTIONAL 23" FOOT

CAL-E1-2LEG-23F

- Standard height adjustable base feet sit proud under a 24" deep top. Use optional 23" depth feet if flush install is required.

Available Finish: Black (BL), Silver (SL), or White (WH)



OPTIONAL 12' POWER CORD

CAL-E1-PWR-12

- Provides extra power cable reach, allowing the base to be setup further away from a power source

Available Finish: Black (BL)



OPTIONAL 30MM LEVELLER

CAL-E1-ELEV

- Provides a larger adjustment range for levelling the calypso base on uneven flooring

Available Finish: Black (BL)



HEIGHT ADJUSTABLE SEATING

PLUTO WOBBLY STOOL

PLU-HAPU

- Rock, swivel, tilt or lean while sitting
- Does not require constant balancing
- Securely grips most floor surfaces including carpet, wood & tile
- Height adjustable 19-27"

Available Finish: Black (BL) Polyurethane finish

Recommended Max. Weight Capacity: 330 lbs



HEIGHT ADJUSTABLE DESKTOP STANDS

HEIGHT ADJUSTABLE DESKTOP STAND

100-DTHA

- Adjustable stand rests on top of existing desk to easily convert traditional desk to standing desk
- Made of wood finished with a laminate coating for durability with a heavy base for stability
- Adjusts to heights between 6.5" & 16.5" with a gas strut for easy customization.

Available Finish: Black (BL)



HEIGHT ADJUSTABLE DESKTOP STAND

100-2-DTHA

- Heavy-duty steel & Melamine construction for maximum stability, includes anti-slip pads on base
- Squeeze lever height-adjustment design
- Worksurface weight Capacity: 13kg / 28.6 lbs
- Keyboard weight capacity: 2 kg / 4.4 lbs
- Height Range 160mm - 445 mm / 6.3" - 17.5"

Available Finish: Black (BL)



INNOVATIONS LAMINATE TOPS



INV-2436TOP

35.5w x 23.75d x 1h

**INV-2442TOP

41.5w x 23.75d x 1h

INV-2448TOP

47.25w x 23.75d x 1h

INV-3060TOP

59.25w x 29.5d x 1h

INV-3066TOP

65w x 29.5d x 1h

INV-3072TOP

71w x 29.5d x 1h

INV-2436TOP
+ ATL-E1-1LEG

INV-2442TOP
+ ATL-E1-1LEG
+ 900-CRANK

INV-2448TOP
+ ATH-E1-2LEG
+ CAL-E1-2LEG
+ RIS-E1-2LEG
+ 900-CRANK

INV-3060TOP
+ ATH-E1-2LEG
+ CAL-E1-2LEG
+ 900-CRANK

INV-3066TOP
+ ATH-E1-2LEG
+ CAL-E1-2LEG

INV-3072TOP
+ ATH-E1-2LEG
+ CAL-E1-2LEG

INV-3060TOP
INV-2436TOP
INV-2442TOP
or
INV-2448TOP
+ ATH-E1-3LEG
+ CAL-E1-3LEG

INV-3066TOP
INV-2436TOP
INV-2442TOP
or
INV-2448TOP
+ ATH-E1-3LEG
+ CAL-E1-3LEG

INV-3072TOP
INV-2436TOP
INV-2442TOP
or
INV-2448TOP
+ ATH-E1-3LEG
+ CAL-E1-3LEG

INV-362466ECM
INV-2436TOP
INV-2442TOP
or
INV-2448TOP
+ ATH-E1-3LEG
+ CAL-E1-3LEG

INV-362472ECM
INV-2436TOP
INV-2442TOP
or
INV-2448TOP
+ ATH-E1-3LEG
+ CAL-E1-3LEG

Standard Innovations Laminate Finishes



**Not available in Pure White or Grey

**INV-362466ECM

65w x 35.5/23.75d x 1h

**INV-362472ECM

71w x 35.5/23.75d x 1h



HEARTWOOD DISTRIBUTORS LTD.
251 ADAMS RD, KELOWNA, BC
T 1 800 567 3060 F 250 765 1213
www.heartwooddl.com



The IN-STOCK Advantage

HDL is committed to maintaining stock at all times. Every effort will be made to ensure these products are available.

Contact your local dealer:

Cover:

Image shows Athena height adjustable bases, Framework panels and Innovations tops and storage. The ATH-E1-3LEG base finish is silver and the tops and storage are shown in Winter Wood.

