

# ACCESSORIES



## Keyboard Trays



**100-KD28**  
Keyboard drawer  
Extra width for mouse  
Available Finish: all standard  
Innovations laminate finishes  
and Black (BL)



**100-COBRA**  
Spring-Assisted Adjustable Keyboard  
Tray  
Easy to use lever handle adjustment  
Ergonomic design including wrist rest  
Weight capacity: 2kg / 4.4 lbs  
Tray tilt function 13° to 15°  
Swivel range -180° to 180°  
Mounting plate depth - 24.8"  
Available Finish: Black (BL)



**100-AKTM-2**  
Articulating Keyboard Tray  
Large 26" w x 9.7" d tray  
Holds up to 2.2 lbs  
Height adjustment - 4 1/4"  
Tilting adjustment - 16° / +20°  
Telescoping tray slides completely  
under the work surface  
Requires 13 1/2" of depth clearance  
under the work surface  
Vinyl wrapped MDF construction  
with wrist rest  
Optional brackets to lower the  
mechanism and clear obstructions  
under the work surface. Clears 2 1/4"  
Available Finish: Black (BL)



**100-KB2**  
Articulating Keyboard Tray  
Track mount hide-away design with 12.75"  
slide travel distance  
18.5" clearance needed for install  
Height adjustment (6.75")  
Swivel range: -20° to 20°  
Heavy-duty steel construction provides  
extra strength & durability  
Available Finish: Black (BL)

## Power Options



**100-DRAWER**  
Metal Storage Drawer  
Undermount, space-saving storage  
drawer ideal for sit-to-stand applications  
Solid steel construction w/ slim, flush  
mount design  
Smooth glide drawer mechanism -  
drawer track travel 170mm (6.7")  
Weight capacity: 5kg / 11 lbs  
Compatible with calypso height  
adjustable desking 30" deep or greater  
Available Finish: Black (BL)



**100-WCD-USB**  
Wireless & USB charging drawer  
5' cord, UL certified  
1 USB, 1 power  
2.36" / 60mm hole size  
Site install required  
Available Finish: Black (BL)



**100-FTP-DATA**  
Flush flip top power grommet  
3 power, 2 data  
Includes 10' power cord, UL certified  
Streamline profile with hidden  
receptacles when in flipped position  
Site install required  
Available Finish: Black (BL)



**100-FTP-USB**  
Flush flip top power grommet  
3 power, 2 USB, 1 data  
Includes 10' power cord, UL certified  
Streamline profile with hidden  
receptacles when in flipped position  
Site install required  
Available Finish: Black (BL)



**100-GRP-USB**  
Power grommet with USB  
5' cord, UL certified  
1 USB, 1 power  
2.36" / 60mm hole size  
Site install required  
Available Finish: Black (BL)



**100-DTP2-USB**  
Clamp to edge of desk or clamp through  
our grommet holes (clamp width 60mm)  
Fit existing HDL & Heartwood standard  
rectangular grommet holes!  
2 power  
2 USB charging (charging only)  
angled, bracket mount design  
6' power cord  
cUL certified for use in Canada  
Available Finish: Black (BL) & White (WH)



**100-UMNT-USB-AA**  
Mounts flush to underside of worksurface  
2 power  
2 USB charging (charging only)  
6' power cord  
UL certified  
Available Finish: Black (BL)



**100-PB6-USB**  
USB charger - 2- 2.1AMP ports - 5V DC  
- 2.1A per port  
USB charging only  
6 - AC 120V ground plugs  
10' power cord with 90° plug  
CUL certified for use in Canada  
Available Finish: Black (BL)

# ACCESSORIES



## Monitor Arms



**100-MA1B**  
 Desk clamp and/or grommet mount  
 14" height adjustment range: 5"– 19"  
 24.0" arm extension  
 90° monitor tilt /90° VESA rotation  
 6.6 lbs.–26.4 lbs. weight capacity  
 Exceeds BIFMA x5.5 requirements  
 10yr warranty  
 Finger touch height adjustment  
 VESA quick release  
 36.0" max. monitor  
 Available Finish: Black (BL) or Silver (SL)



**100-MA2B**  
 Desk clamp and/or grommet mount  
 14" height adjustment range: 5"– 19"  
 24.0" arm extension  
 90° monitor tilt /90° VESA rotation  
 4.4 lbs.–19.8 lbs. weight capacity (per arm)  
 Exceeds BIFMA x5.5 requirements  
 10yr warranty  
 Finger touch height adjustment  
 VESA quick release  
 32.0" max. monitor  
 Available Finish: Black (BL) or Silver (SL)



**100-MA1**  
 Pneumatic monitor arm - single  
 Capacity: 19.8 lbs  
 Clamp to desk or grommet mount  
 Landscape or portrait orientation  
 Holds monitor 13" - 30"  
 90° swivel angle  
 180° rotation in both directions  
 15° tilt angle  
 Available Finish: Black (BL) or Silver (SL)



**100-MA2**  
 Pneumatic monitor arm - double  
 Capacity: 16 lbs per arm  
 Clamp to desk or grommet mount  
 Landscape or portrait orientation  
 Holds monitor 13" - 30"  
 90° swivel angle  
 180° rotation in both directions  
 15° tilt angle  
 Available Finish: Black (BL) or Silver (SL)



**100-LPTP**  
 Laptop holder attachment for  
 pneumatic monitor arms  
 Compatible with 100-MA1, 100-MA2  
 100-MA1B & 100-MA2B  
 Fits laptop 11" to 15.6"  
 Easy install  
 Available Finish: Black (BL)



**100-MA2C**  
 Pneumatic monitor arm - double  
 Capacity: 22 lbs per arm  
 Clamp to desk or grommet mount  
 Landscape or portrait orientation  
 Holds monitor 17" - 32"  
 90° swivel angle  
 180° rotation in both directions  
 40° tilt angle  
 Available Finish: Black (BL)



**100-LCD1**  
 LCD single monitor arm  
 Capacity: 22 lbs  
 Grommet mount  
 Available Finish: Silver (SL)



**100-LCD2**  
 LCD dual monitor arm  
 Capacity: 13.2 lbs per arm  
 Grommet mount  
 Available Finish: Black (BL) or Silver (SL)

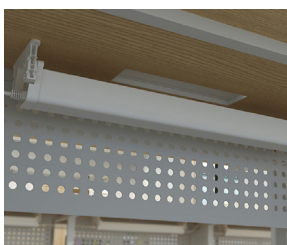
## Wire Management



**100-WIRE**  
 Wire management kit  
 Includes 5 hangers and mounting  
 hardware  
 Available Finish: Light Grey (GR)



**100-WM1300**  
 Wire management for height  
 adjustable  
 Length can be easily changed  
 Available Finish: Black (BL), Silver (SL)  
 or White (WH)



**100-WMT22**  
 22" Wire Management Tray  
 Easy accessibility  
 Interlocking units for easy expansion  
 Available Finish: White (WH)



**100-WMT22-RACK**  
 22" Wire Management RACK  
 Easy accessibility  
 Includes mounting hardware  
 Available Finish: Light Grey (GR)

# ACCESSORIES



## CPU Holders



**100-2-HCPU**  
 Hanging CPU holder  
 Fixed location install  
 Adjustable for different width CPU units  
 Durable heavy-gauge steel  
 Mounting hardware included  
 Available Finish: Black (BL) & White (WH)



**100-HCPU**  
 Track installed, retractable hanging CPU holder  
 Track depth 16"  
 Adjustable for different width CPU units  
 Swivels 360 degrees  
 Supports CPU up to 50lbs  
 Durable heavy-gauge steel  
 Mounting hardware included  
 Available Finish: Black (BL)

## Grommets



**100-GR1**  
 2" x 3" Rectangular Grommet  
 Site install required  
 Available Finish: Black (BL) & Grey (GR)

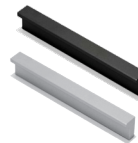


**100-GR3**  
 3" Round Grommet  
 Site install required  
 Available Finish: Black (BL)

## Handles



**Aluminium Scoop - 2 Sizes**  
 Default handle for Evening Zen & Grey Dusk. Order separately to retrofit other laminate finishes.  
 Available finish: Aluminium (AL)



**Bar**  
 Default handle for Winter Wood laminate finish is Aluminium Bar. Order separately to retrofit other laminate finishes or for Black Bar handles  
 Available finish: Black (BL) & Aluminium (AL)



**Black Scoop - 2 Sizes**  
 Default handle for Autumn Maple, Sugar Maple, Hardrock Maple & Royal Mahogany laminate finishes Order separately to retrofit other laminate finishes.  
 Available finish: Black (BL)



**Step - 2 Sizes**  
 Optional handles. Order separately.  
 Available finish: Champagne (CP)

## Task Lights

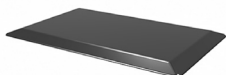


**100-LED36TL - 36"**  
**100-LED48TL - 48"**  
 LED task light  
 160° swivel feature  
 Max Watt is 180W in-line  
 Built-in occupancy option  
 Available Finish: Aluminium (AL)



**100-24TL - 24"**  
**100-36TL - 36"**  
**100-48TL - 48"**  
 Fluorescent task light  
 Available Finish: Black (BL)

## Anti-fatigue Mat



**100-2030AFM**  
 PVC with a high-density polyurethane core  
 Easy clean  
 Able to withstand common house fluids such as grease & liquids  
 non-curling bevelled edges  
 Available Finish: Black (BL)

# ACCESSORIES



## Storage



**100-MMPUF**  
**Metal Mobile Storage**  
 Box/box/file  
 All drawers lock  
 Can be keyed alike see 100-COREPACK  
 Available Finish: Black (BL), Titanium (TT) and White (WH)



**100-MMPFF**  
**Metal Mobile Storage**  
 File/file  
 All drawers lock  
 Can be keyed alike see 100-COREPACK  
 Available Finish: Black (BL), Titanium (TT) and White (WH)



**100-MMPF**  
**Metal Mobile Storage**  
 Box/file  
 All drawers lock  
 Heavy-duty casters  
 Max. additional weight capacity 220lbs  
 Can be keyed alike see 100-COREPACK  
 Available Finish: Black (BL) & Titanium (TT)



**100-MMPF-CUSHFA (Fabric)**  
**100-MMPF-CUSHPU (Polyurethane)**  
**Metal Mobile Pedestal Cushion**  
 Optional cushion  
 Pedestal sold separately  
 Easy velcro attachment  
 For use with 100-MMPF **ONLY**



**100-COREPACK**  
 Locking units ship with random key numbers unless units need to be keyed alike.  
 For Keyed alike units order 100-COREPACK -the number of keyed alike units  
 Example: 100-COREPACK-3 for three units keyed alike

## Desk Top Height Adjustable Unit



**100-DTHA**  
 Converts traditional desk to standing desk  
 Adjusts to heights between 6.5" & 16"  
 Gas strut for easy height adjustment  
 Durable construction  
 Compatible with pneumatic monitor arms  
 Available finish: Black (BL)

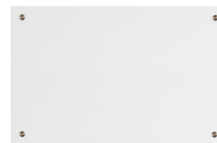


**100-2-DTHA**  
 Heavy-duty steel & melamine construction for maximum stability  
 Includes anti-slip pads on base  
 Squeeze lever height-adjustment design  
 Keyboard weight capacity: 2 kg / 4.4 lbs  
 Height range 160mm - 445 mm / 6.3" -17.5"  
 Compatible with pneumatic monitor arms  
 Available finish: Black (BL)

## Glass Whiteboard



**INV-1668MB**  
**16" x 68" Glass Dry Erase Whiteboard**  
 Includes all mounting hardware  
 Suitable for wall mount  
 Fits inside 72" hutch cavity  
 Available finish: White Glass (WH)



**INV-2434MB**  
**24" x 34" Glass Dry Erase Whiteboard**  
 Includes all mounting hardware  
 Suitable for wall mount  
 Available finish: White Glass (WH)